

Flamingo key fob

Material required:

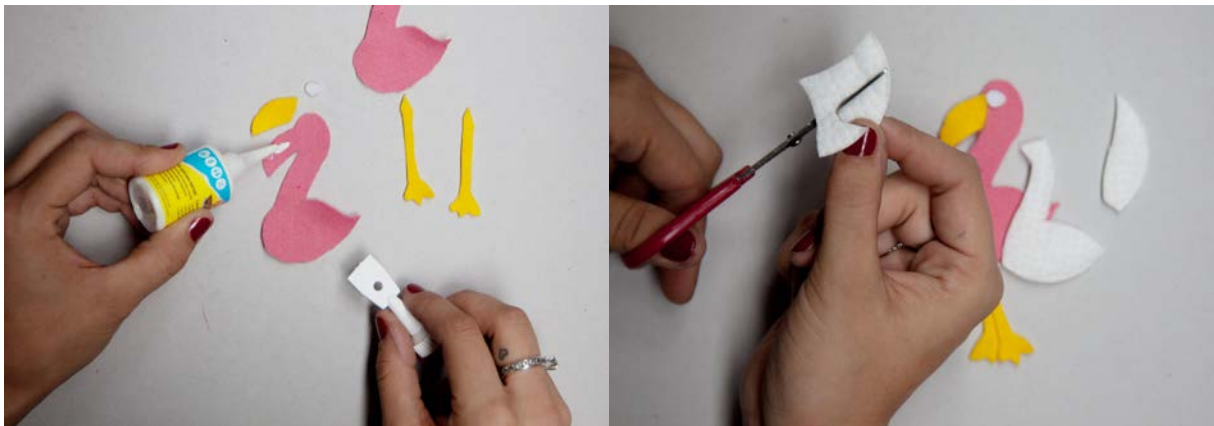
- Felt in various colours
- Key fob with loop
- Cotton wool or cotton wool pads
- Needle
- Thread in the corresponding colour
- Scissors
- Pencil
- Felt-tip pen
- BLANCOL special adhesive TEXTILE



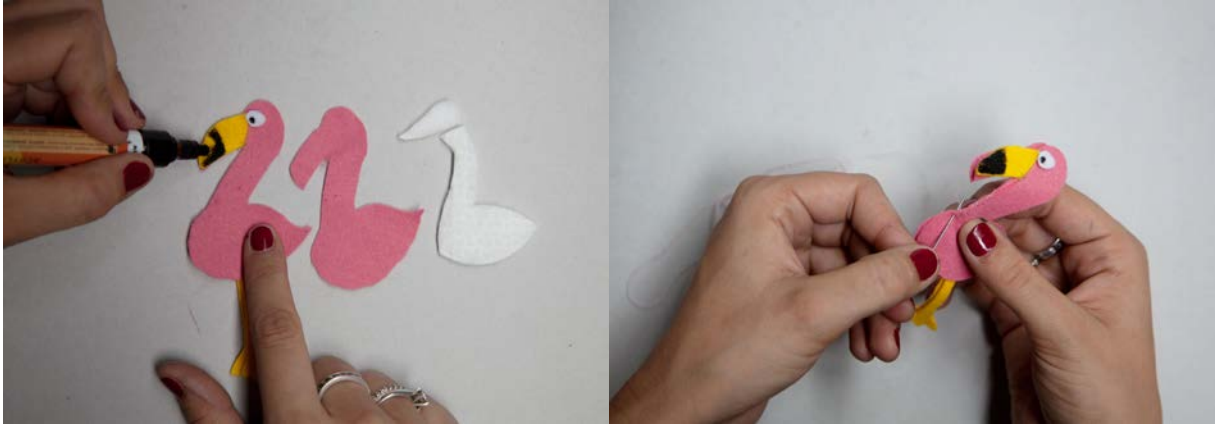
1. First draw the shape of the flamingo on your felt. All shapes are required twice.



2. Now cut them out and stick the eyes, the beak, the legs and the wings onto the flamingo body at the right place, using BLANCOL special adhesive TEXTILE. Leave to dry thoroughly.



3. Draw the flamingo shape on the cotton wool pad and cut this out approx. 1 mm smaller than the original shape. The flamingo now has pupils painted onto its eyes and a black tip onto its beak. The cotton wool pad is then clamped between the flamingo body and sewn together.



4. All you need to still do now is sew the flamingo onto the key fob and your flamingo key fob is finished.

